

Key Features

- Three bedrooms
- Purpose built
- Built under one year ago
- Family bathroom + ensuite shower rooms
- Wooden floors
- Allocated parking
- Popular residential location
- Walking distance from shops

Description

Lorem ipsum dolor sit amet, consectetur adipiscing elit. Vivamus aliquet velit non lectus tristique, et suscipit augue eleifend. Curabitur mollis ex venenatis ipsum luctus, non fermentum turpis convallis. Praesent nec ligula consequat, tristique leo id, malesuada ex. Nulla aliquet vestibulum eros eget bibendum. Pellentesque ullamcorper lobortis congue. Praesent elementum fermentum felis sit amet lacinia. Sed porttitor congue ligula, at vulputate sem tincidunt quis. Suspendisse eleifend tempor metus ac fermentum.

Sed sit amet mi quis leo tempus suscipit. Vestibulum fringilla eleifend neque, id condimentum arcu suscipit eu. Nullam imperdiet aliquam odio sed auctor. Mauris sed pulvinar orci. Cras facilisis quam sit amet eros euismod egestas. Aenean libero ligula, vehicula ut imperdiet ut, egestas eget metus. Nam vulputate semper orci, at volutpat leo efficitur et. Ut commodo cursus elit, in vestibulum justo gravida a.

Location

Lorem ipsum dolor sit amet, consectetur adipiscing elit. Vivamus aliquet velit non lectus tristique, et suscipit augue eleifend. Curabitur mollis ex venenatis ipsum luctus, non fermentum turpis convallis. Praesent nec ligula consequat, tristique leo id, malesuada ex. Nulla aliquet vestibulum eros eget bibendum. Pellentesque ullamcorper lobortis congue. Praesent elementum fermentum felis sit amet lacinia. Sed porttitor congue ligula, at vulputate sem tincidunt quis. Suspendisse eleifend tempor metus ac fermentum.

Second Floor

HALL - Electric storage heater, wooden flooring, entry phone with two low-voltage light(s) and smoke detector, double door to airing cupboard housing hot water cylinder and with slatted shelving.

MASTER BEDROOM - 10' 11" x 5' 2" (3.33m x 1.6m) Full height double glazed window to rear, double wardrobe(s), electric storage heater, fitted carpet, telephone point, TV point.

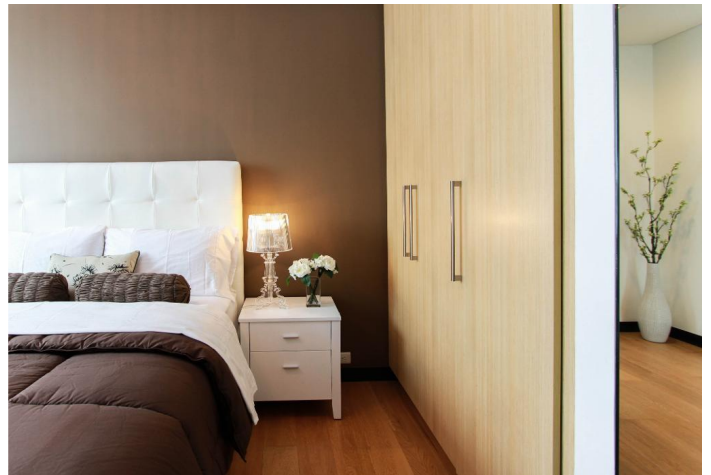
EN-SUITE SHOWER ROOM - an unusual shaped room
Fitted with three piece suite comprising double shower with glass screen, pedestal wash hand basin with storage under and modern chrome mixer tap and WC with hidden cistern, heated towel rail, extractor fan, wall mounted mirror, shaver point.

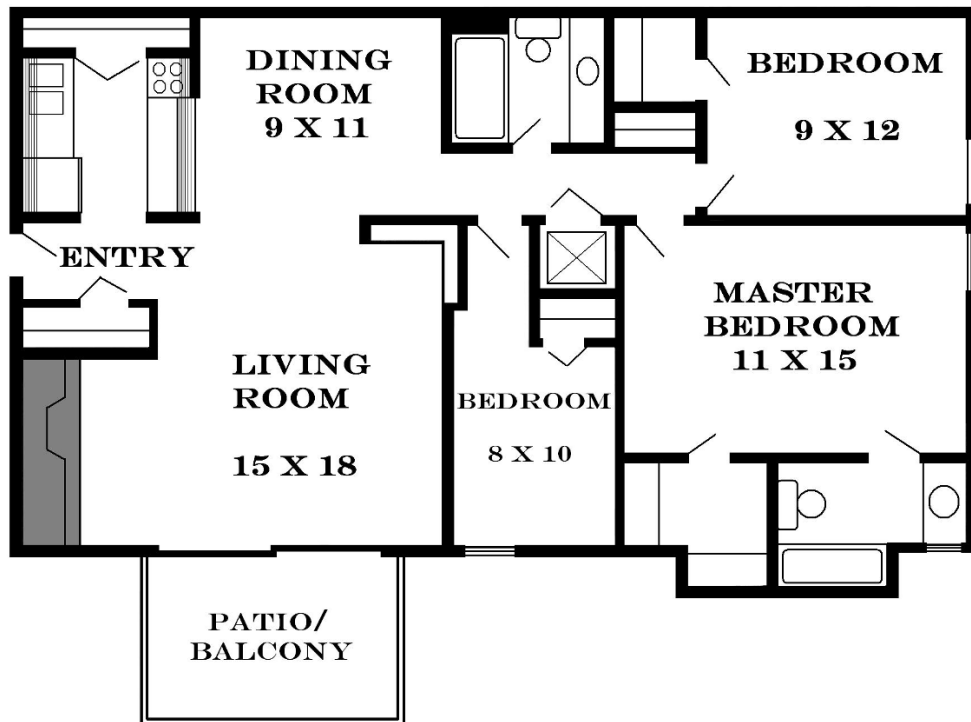
BEDROOM 2 - 10' 11" x 6' 2" (3.33m x 1.88m) Full height double glazed window to rear, electric storage heater, fitted carpet, telephone point, TV point.

FAMILY BATHROOM - Fitted with three piece suite comprising panelled bath with hand shower attachment, modern chrome mixer tap and shower curtain, pedestal wash hand basin with storage under and modern chrome mixer tap and WC, WC with hidden cistern, heated towel rail, extractor fan, wall mounted mirror, shaver point, tiled floor with two low-voltage.

LOUNGE/DINER - 14' 2" x 11' 0" (4.33m x 3.37m) Wooden floor, two telephone points, satellite TV point TV aerial point, PVCu double door, to: balcony overlooking private gated parking area.

KITCHEN - 12' 0" x 6' 3" (3.68m x 1.92m) Fitted with a matching range of base and eye level units with worktop space over with underlighting, 1&1/4 bowl stainless steel sink unit with draining board, waste disposal unit, integrated fridge/freezer, slimline dishwasher, washing machine and tumble drier, fitted fan assisted oven, built-in ceramic hob with extractor hood over, built-in microwave, tiled flooring with three recessed low-voltage light(s).





Energy Efficiency Rating			
Score	Energy rating	Current	Potential
92+	A		
81-91	B		
69-80	C	75 C	80 C
55-68	D		
39-54	E		
21-38	F		
1-20	G		