



## 4 Bedroom Luxury Apartment

Old Steine, Brighton, BN1 1EL

£600,000



- Example Feature 1 • Example Feature 2 • Example Feature 3 • Example Feature 4
- Example Feature 5 • Example Feature 6 • Example Feature 7 • Example Feature 8
- Example Feature 9 • Example Feature 10



## 4 Bedroom Luxury Apartment

£600,000

Old Steine, Brighton, BN1 1EL

This is a demonstration property to show how Domus Estate Agent Software works. To remove this property set the status to withdrawn and untick it as on the market in the edit property screen.

Lorem ipsum dolor sit amet, consectetur adipiscing elit. Nam sem nisl, euismod sed egestas in, ullamcorper nec ipsum. Phasellus a euismod metus. Duis quis urna tempor, fringilla arcu ac, porttitor lorem. Pellentesque lacus nulla, placerat vel viverra in, sodales in nisi. Morbi vehicula luctus quam non sagittis.

This is example location text. Popular central location within easy reach of shopping facilities, restaurants, bars and cafes. Area well serviced by bus routes. Mainline railway station within half a mile. Seafront within one mile.

Lorem ipsum dolor sit amet, consectetur adipiscing elit. Nam sem nisl, euismod sed egestas in, ullamcorper nec ipsum. Phasellus a euismod metus. Duis quis urna tempor, fringilla arcu ac, porttitor lorem. Pellentesque lacus nulla, placerat vel viverra in, sodales in nisi. Morbi vehicula luctus quam non sagittis.



## Property Description

### First Floor

**Living Room - 16' 4" x 22' 11" (5m x 7m)** A beautiful bright and contemporary living room. Large windows providing a lot of light, also laminate flooring and a modern fire place.

**Kitchen - 22' 11" x 19' 8" (7m x 6m)** Very generously sized modern kitchen. Stylish black work tops including a built in stainless steel electric oven, gas hob, dishwasher and a lot of cupboard space.

**WC - 13' 1" x 6' 6" (4m x 2m)** First floor WC leading off of hallway. Recently decorated to a high standard.

**Hallway - 22' 11" x 4' 11" (7m x 1.5m)** A long modern hallway leading to lounge, kitchen and also stairs leading to second floor.

**Office - 19' 8" x 13' 1" (6m x 4m)** A generous sized office with lots of shelving space.

### Second Floor

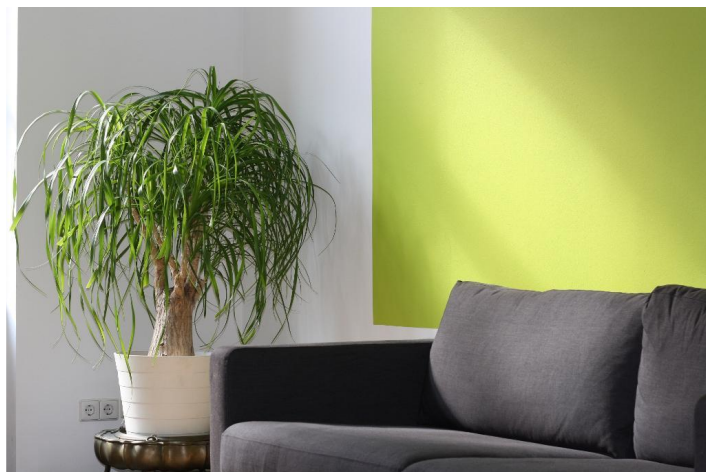
**Bedroom 1 - 22' 11" x 26' 2" (7m x 8m)** Generously sized bedroom with high quality built in cupboards, neutrally decorated ready for you to add your own stamp to it.

**Bedroom 2 - 26' 2" x 29' 6" (8m x 9m)** Large and well proportioned bedroom, this also has a modern ensuite bath and shower room.

**Bedroom 3 - 26' 2" x 22' 11" (8m x 7m)** Another light and spacious well proportioned bedroom, built in cupboards and also great views over the downs.

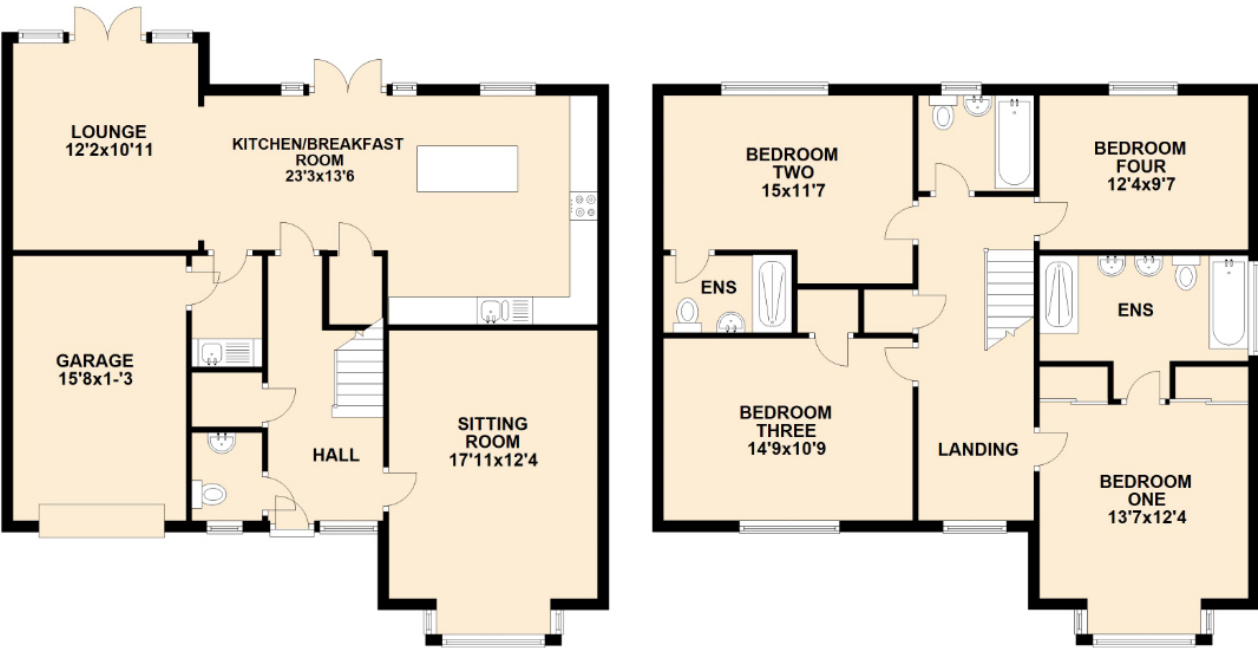
**Bedroom 4 - 26' 2" x 29' 6" (8m x 9m)** Wonderful double bedroom with built in space for shelves, cupboards and also featuring a large ensuite shower room.

**Main Bathroom - 16' 4" x 19' 8" (5m x 6m)** Modern and newly built bath and shower room, this features a large bath and shower area with heated flooring and towel rail.





Floorplan(s)



Energy Efficiency Rating			
Score	Energy rating	Current	Potential
92+	A		
81-91	B		90   B
69-80	C	80   C	
55-68	D		
39-54	E		
21-38	F		
1-20	G		

Additional Information

This is an example property to demonstrate how Domus Estate Agent Software works. To remove this property you can set the status to withdrawn and untick it as on the market in the edit property screen.