

4 Bedroom Detached for Sale - £400,000

Old Steine, Brighton, East Sussex, BN1 1EL



KEY FEATURES:

- EXAMPLE FEATURE 1 • EXAMPLE FEATURE 2 • EXAMPLE FEATURE 3 • EXAMPLE FEATURE 4 • EXAMPLE FEATURE 5 • EXAMPLE FEATURE 6 • EXAMPLE FEATURE 7 • EXAMPLE FEATURE 8

Description

This is a demonstration property to show how PDF brochures work within the Domus system. This brochure will extend in length to match the information filled out on a property, for example if you want to include more photos an extra photo page will pop up, or if you want to include a longer description this will also extend. We can also customise the layout to work best with your data creating the perfect one template fits all. To find out more about our PDF brochures please call 0330 445 0145 or e-mail support@domus.net.

Location

This is example location text. Lorem ipsum dolor sit amet, consectetur adipiscing elit. Aliquam euismod, purus et varius consequat, mi erat tincidunt lorem, eget consectetur quam lacus facilisis lorem. Pellentesque sit amet ipsum nec tortor vestibulum commodo non nec ipsum. Proin accumsan urna luctus aliquet sagittis.

Lorem ipsum dolor sit amet, consectetur adipiscing elit. Aliquam euismod, purus et varius consequat, mi erat tincidunt lorem, eget consectetur quam lacus facilisis lorem. Pellentesque sit amet ipsum nec tortor vestibulum commodo non nec ipsum. Proin accumsan urna luctus aliquet sagittis.

Ground Floor

Living Room - 16' 4" x 22' 11" (5m x 7m) A beautiful bright and contemporary living room. Large windows providing a lot of light, also laminate flooring and a modern fire place.

Kitchen - 22' 11" x 19' 8" (7m x 6m) Very generously sized modern kitchen. Stylish black work tops including a built in stainless steel electric oven, gas hob, dishwasher and a lot of cupboard space.

WC - 13' 1" x 6' 6" (4m x 2m) Downstairs WC leading off of hallway. Recently decorated to a high standard.

Second Floor

Bedroom 1 - 22' 11" x 26' 2" (7m x 8m) Generously sized bedroom with high quality built in cupboards, neutrally decorated ready for you to add your own stamp to it.

Bedroom 2 - 26' 2" x 29' 6" (8m x 9m) Large and well proportioned bedroom, this also has a modern ensuite bath and shower room.

Bedroom 3 - 26' 2" x 22' 11" (8m x 7m) Another light and spacious well proportioned bedroom, built in cupboards and also great views over the downs.

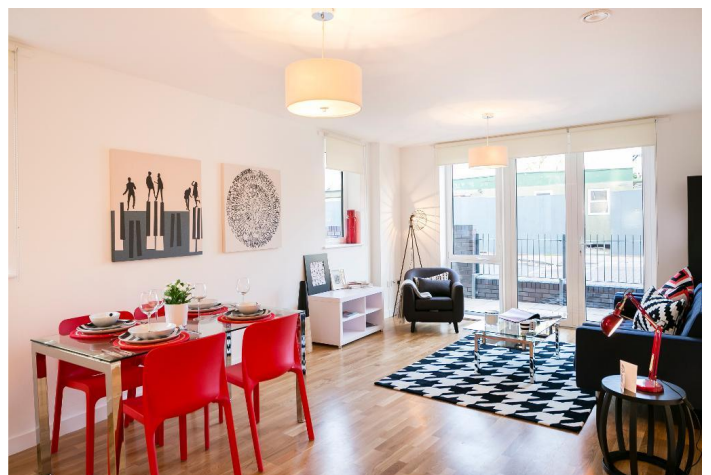
Bedroom 4 - 26' 2" x 29' 6" (8m x 9m) Wonderful double bedroom with built in space for shelves, cupboards and also featuring a large ensuite shower room.

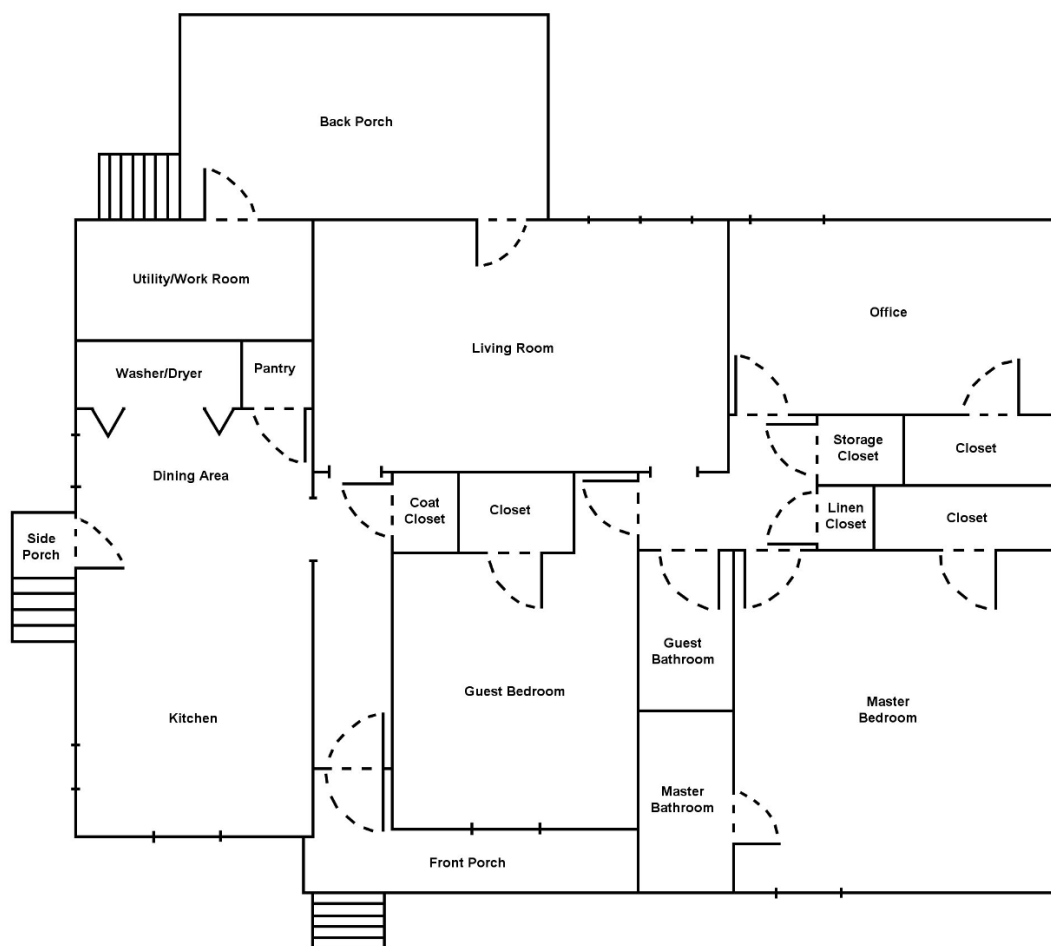
Main Bathroom - 16' 4" x 19' 8" (5m x 6m) Modern and newly built bath and shower room, this features a large bath and shower area with heated flooring and towel rail.

Exterior

Rear Garden - 32' 9" x 39' 4" (10m x 12m) A very large rear garden with a lovely large patio for those sunny days. This garden has a lot of character and includes a very well kept lawn with winding path to your very own green house.

Front Driveway - 26' 2" x 22' 11" (8m x 7m) A good sized driveway leading to your double garage, also space for parking two cars outside.





Additional Photos



Additional Information

This is a demonstration property to show how PDF brochures work within the Domus system. This brochure will extend in length to match the information filled out on a property. We can also customise the layout to work best with your data. To find out more please call 0330 445 0145 or e-mail support@domus.net.